

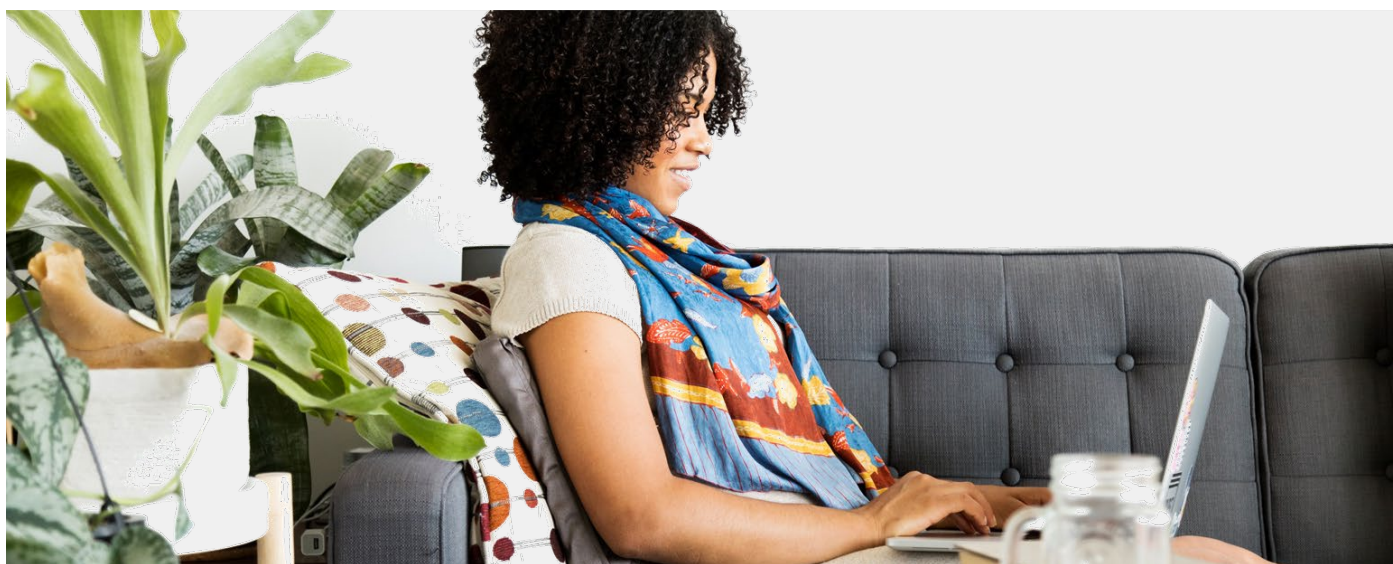
Don't let your talent supplier hold you back.

Kelly's Flexible Work Transformation Keeps Paying Off For Clients

Years before the world was aware of COVID-19, Kelly saw customer needs evolving.

While branches remain a valuable part of needs fulfillment, customers also wanted agile operational scale as business grew and shifted. 91 of the Fortune 100 were trusting us to rise to meet that demand for nimble growth.

And so we changed.



RESULTS DURING COVID | Since late March, Kelly has engaged over 5,000 COVID-specific support roles through our flexible work transformation.

Our Transformation

As our competitors are learning, it can take years for a fit-centered, personal business like ours to adapt to working remotely.

In 2019, with a team of 8,000 supporting a 500,000-strong network of talent, Kelly prioritized customer flexibility, talent opportunity & safety, specialty know-how, and local market depth as we built new flexible work models. We began to pair branches with digital teams, teaching them to deliver excellence while flexibly shifting where scale was needed. We made the Kelly distinctives our clients love – local expertise and specialty know-how – accessible online, in-person and on-demand.

As our 'Best Use of Online Recruitment 2020' award from Onrec demonstrates, Kelly has also made substantial skill and technology investments to unlock virtual recruitment excellence. Our new workflows and tools make remote screening, onboarding, and placement quite effective. Through them, Kelly delivers quality talent while meeting clients' need to scale.

Impact Today

Kelly is staffing at full-speed today because of these hard-earned skills. From recruiting to sales to corporate, we've kept teams safe without disrupting operations. One evidence of this: Kelly has engaged over 5,000 COVID support roles since demand first arose in late March.

With the ability to flexibly staff and remote-talent models like KellyConnect, Kelly is uniquely equipped to meet your staffing needs.

Contact Kelly or visit [ThatsWhatKellyDoes.com](https://www.kelly.com/ThatsWhatKellyDoes.com) to learn how we can help.

